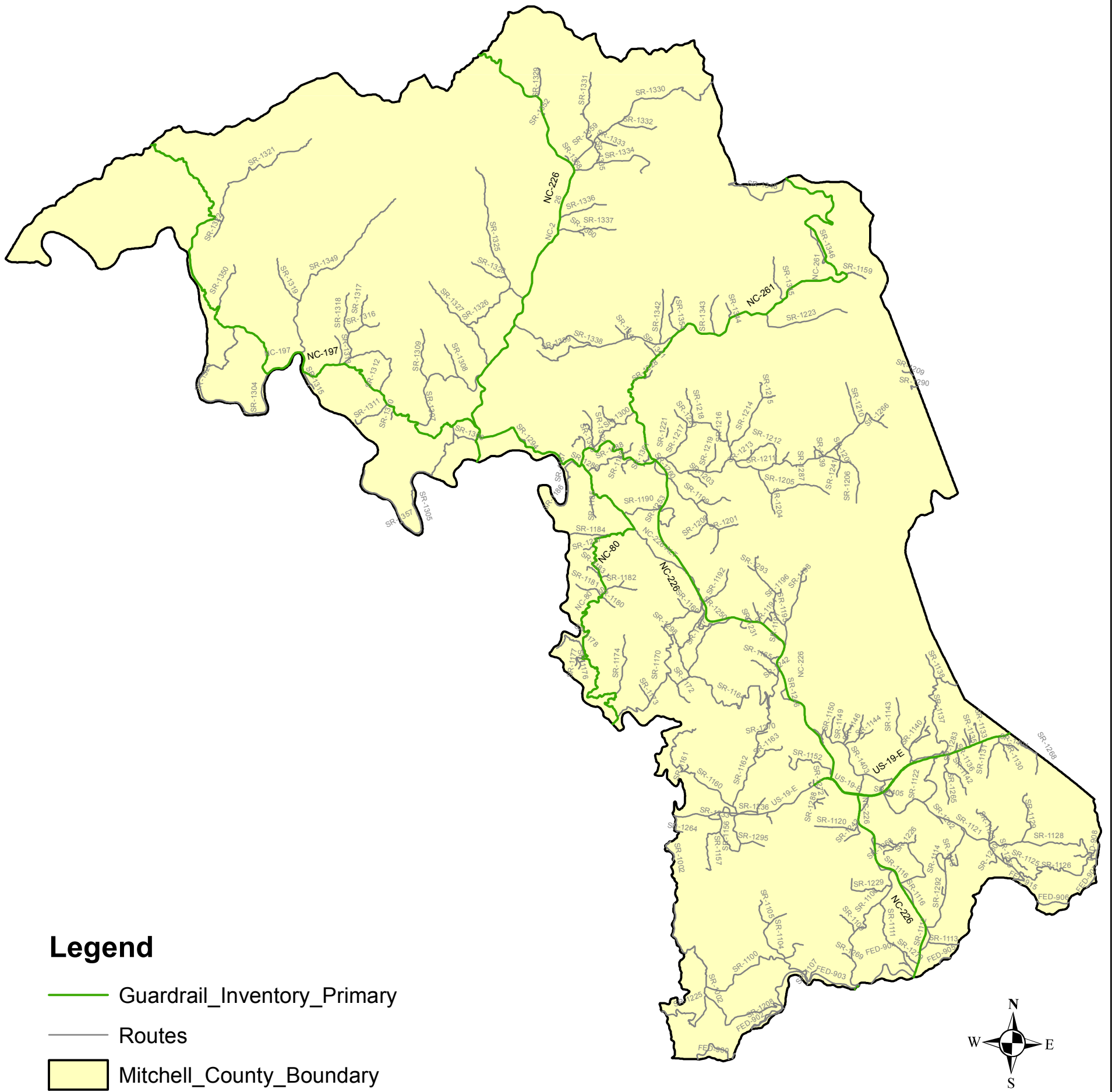


MITCHELL COUNTY, VEGETATION MANAGEMENT AT STATIONARY OBJECTS, GUARDRAIL, PRIMARY ROUTES



Legend

- Guardrail_Inventory_Primary
- Routes
- Mitchell_County_Boundary

MITCHELL-PRIMARY GUARDRAIL				WBS 13RE.106111			
Name	Route	From	To	Begin MP	End MP	Length	G/R Length
NC 197	NC 197	Yancey Co.	Tenn S.L.	0.00	15.92	15.92	31,600
NC 226	NC 226	McDowell Co.	Tenn S.L.	0.00	31.28	31.28	94,500
NC 261	NC 261	NC 226	Tenn S.L.	0.00	12.85	12.85	1,675
NC 80	NC 80	NC 226A	Yancey Co.	0.00	10.32	10.32	1,500
US 19E	US 19E	Avery Co.	SR 1272	0.00	4.88	4.88	19,800